

Innovative Heating technology

Acting responsibly –
sustainable heating



At home

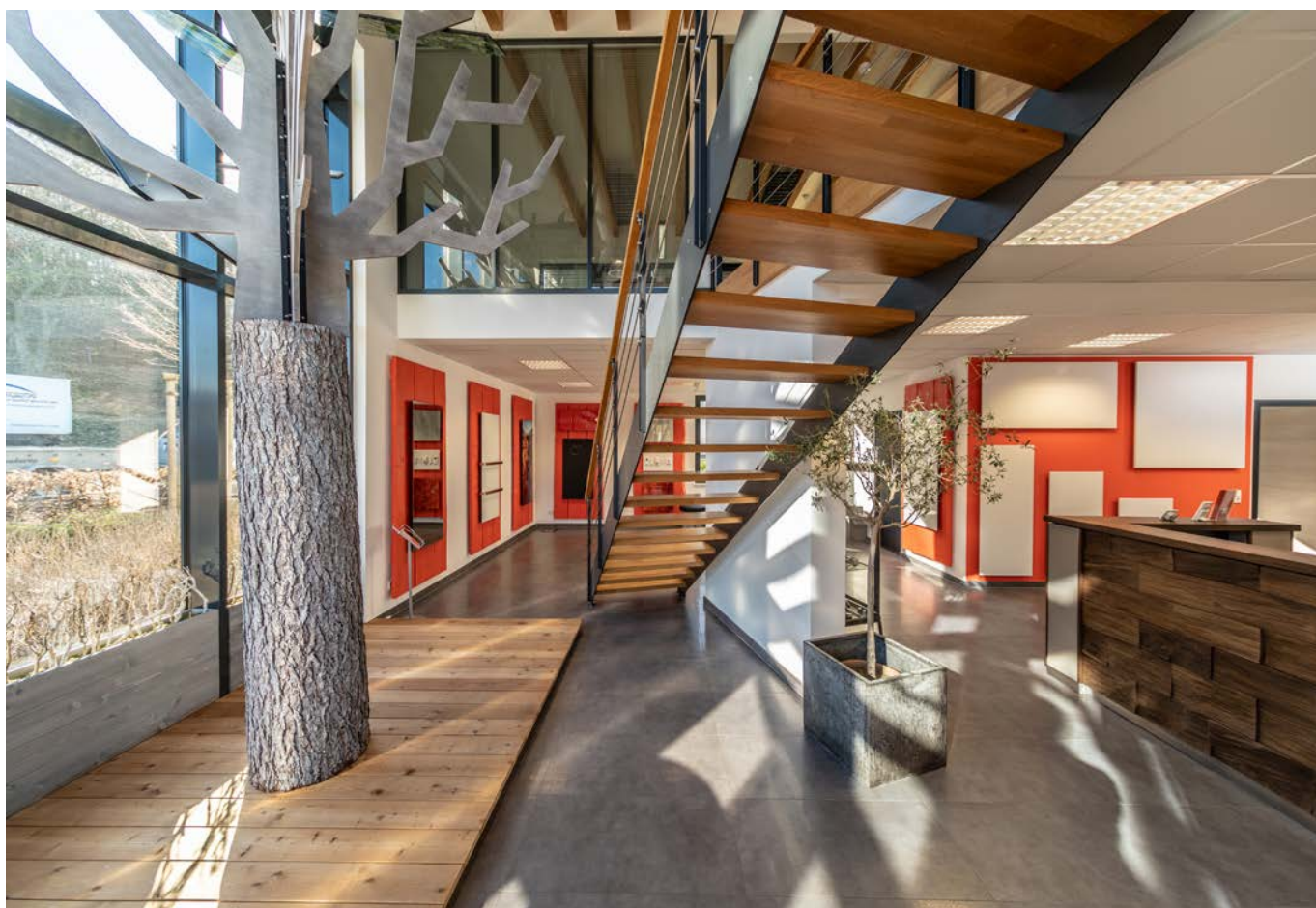
PRODUCT CATALOG 2026

Infrared heaters
Bathroom and designer radiators
Radiant heaters
Special applications
Control technology
Accessories

welltherm[®]
España

welltherm[®]

Acting responsibly –
sustainable heating





WELCOME

Welltherm GmbH is one of Europe's leading companies in the field of electric heating. At our development and production site in Lüdenscheid, we manufacture high-quality infrared and electric heating systems. Carefully selected components, meticulous workmanship, and customized production of our products promise optimal and sustainable heating comfort.

Our production facility in Lüdenscheid, certified according to DIN EN ISO 9001:2015, is proof of our commitment to the highest quality and product safety.

In addition, we were one of the first manufacturers to receive the EIHA seal of approval.

Expertise and decades of experience in the development and manufacture of heating elements for industrial applications (including laboratory equipment, medical technology, and the automotive industry) set us apart and form the basis for the highest quality and innovation standards of our infrared heating systems.

This expertise was and is the basis for Bajas to develop and continuously improve the most efficient and high-quality heating systems.

We guarantee precise temperature control and maximum process reliability. The latest technologies, pioneering future visions, and innovative products make us your strong partner in the field of electric heating.

EIHA quality seal

Welltherm infrared heating systems meet the requirements for the EIHA seal of approval.

1. Radiation efficiency according to IEC 60675-3

The key criterion for the quality seal is radiation efficiency in accordance with the IEC 60675-3 standard. This standard evaluates how much of the energy used is converted into radiant heat. Efficiency is crucial for the performance and cost-effectiveness of heating devices. 40% is the minimum. Welltherm infrared heaters are at the upper limit of all measured manufacturer values. The radiation efficiency under the ceiling differs from that on the wall. In general, the radiation efficiency increases with the surface area and is higher on the ceiling than on the wall.

2. Compliance with EU quality standards

Welltherm infrared heaters meet the requirements of EN 60335-1, EN 60335-2-30, and the regulations for EMC, RoHS, and WEEE. This ensures that the fundamental

European safety, environmental, and quality standards are met.

3. Production monitoring

Production monitoring by TÜV Süd has been part of Welltherm's quality policy for many years. In this context, we ensure that our products are "Made in Germany" in compliance with all standards and certifications.

4. Compliance with the Ecodesign Directive

Infrared heaters must also comply with the requirements of the Ecodesign Directive (2009/125/EC). This directive aims to minimize the environmental impact of products while maximizing energy efficiency.





Welltherm complies with the Ecodesign Directive

Welltherm infrared heating systems are designed to transfer heat within a closed room in which the device is located in such a way that a specific temperature level that is comfortable for humans can be achieved and maintained. For this type of room temperature control, the environmentally friendly design of the devices used is determined by Regulation (EU) 2024/1103 (Ecodesign).

For many years, the Welltherm wireless control system has offered comprehensive energy-saving functions to create comfortable warmth with minimal energy consumption and simple operation. Of course, the Welltherm wireless

control system not only meets the minimum requirements of the Ecodesign Directive, but also achieves the best possible rating currently available through the use of a window contact switch, a router, and a thermostat with adaptive control of the start of heating. The combination of our particularly efficient ESHC+ technology and an ecologically exemplary control system underlines the values we stand for at Welltherm: responsible action and sustainable heating.

Quality - Made in Germany

“Made in Germany” is recognized worldwide as a seal of quality for the highest standards. Our heating systems are also handmade and tailor-made products of the highest quality and value. We rely on a combination of state-of-the-art technology and traditional values to achieve the perfect result for our customers. It goes without saying that all our heating systems meet the legal requirements and have been awarded the relevant test marks for safety, compatibility, and environmental standards with regard to the materials used.

Our heating systems consist of carefully selected components from manufacturers and suppliers in Germany and are manufactured at our production facility in Lüdenscheid in the Sauerland region. In production, we focus on

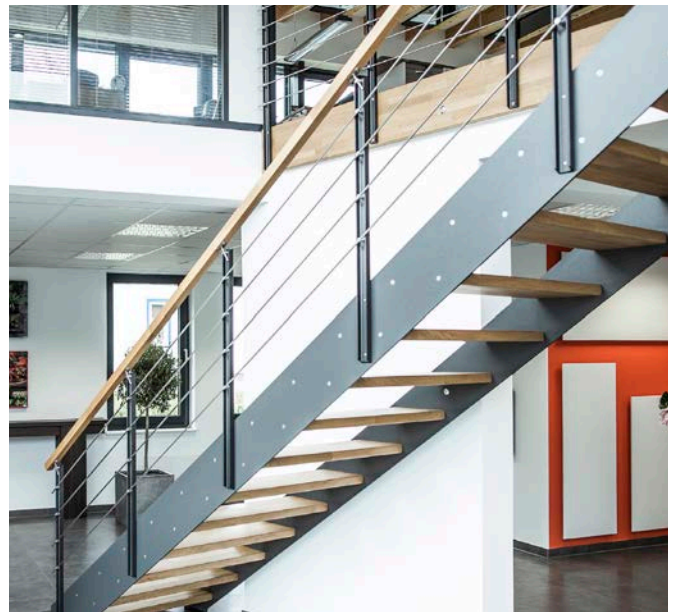
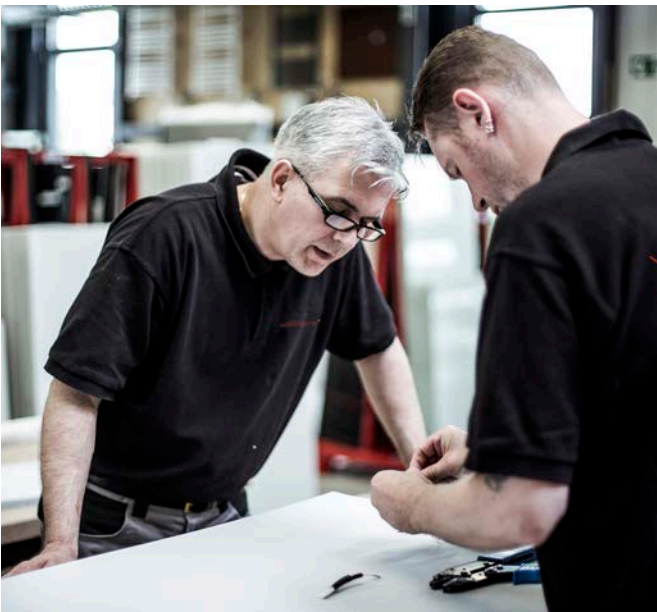
the essentials and gear our technology towards people and their needs. We place emphasis on durable and environmentally friendly products. During manufacturing, we place particular emphasis on energy efficiency, the recyclability of materials, and the environmental compatibility of the components used.

Our customers appreciate the exceptional quality of Welltherm products, the transparency of the production process, and the opportunity to purchase unique items. High-quality materials, meticulous workmanship, and attention to detail make our products truly special. Welltherm infrared heating systems are 100% “Made in Germany,” tested, and certified.



5-year warranty





The infrared principle

Infrared heating is an electric heating system based on radiant heat. It is also known as thermal wave heating or radiant heating and, similar to the sun, generates particularly pleasant direct heat. The main difference to a conventional heating system is that infrared heating does not heat the air in the room, but rather the surrounding room envelope—i.e., the walls, floor, and objects in the room.

It is precisely this principle that makes infrared heating so popular: the even distribution of heat to the room surfaces creates a particularly comfortable and healthy climate. The heat does not move through the room, but is continuously emitted from the surrounding surfaces. At the same time, infrared heating is characterized by low acquisition costs, a wide variety of designs, and very high efficiency.





The most efficient technology for sustainable heating

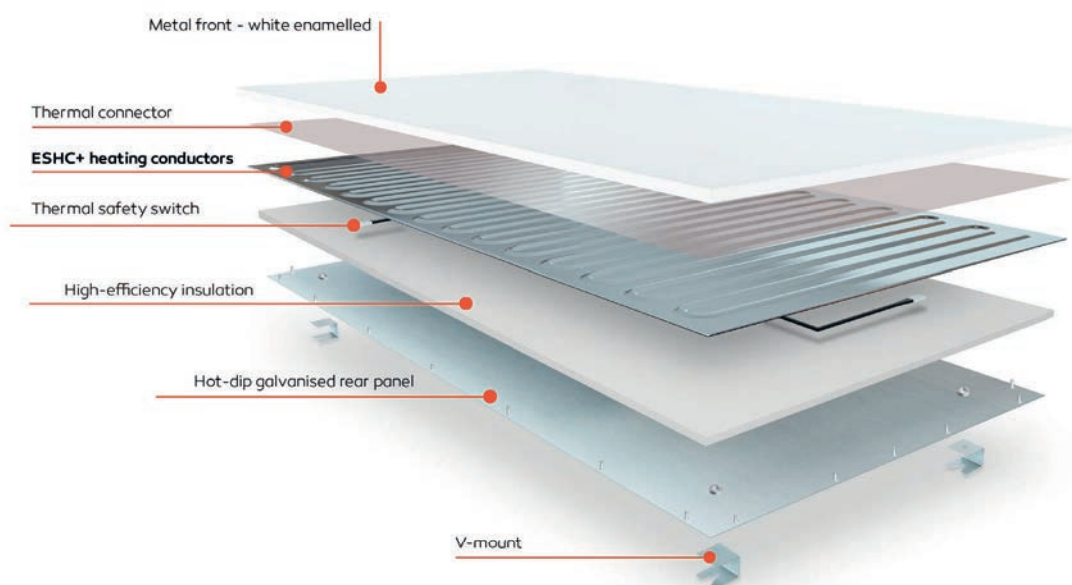
At Welltherm, we take our responsibility towards the environment and our customers seriously. This motivation led us to develop our ESHC+ technology, which is the basis of every Welltherm infrared heater and enables unparalleled efficiency.

Welltherm infrared heaters with ESHC+ achieve top marks in terms of heating time and maximum achievable temperature, resulting in outstanding radiation efficiency.

This makes Welltherm heaters among the fastest and most efficient heating systems available on the market. The very short heating-up time of ESHC+ technology guarantees fast and comfortable heating in living areas. A fast heating system pays off, especially in bathrooms where heat is only needed temporarily, as it en-

ables energy-saving, short preheating times. In addition, Welltherm's intelligent wireless thermostats feature adaptive control of the start of heating, enabling them to reach the desired comfort temperature at exactly the desired time with only minimal lead time.

This creates the perfect combination of efficient heating technology and intelligent control, enabling high comfort at low operating costs. The superiority of ESHC+ technology is mainly due to its maximum temperature of 107 °C. While comparable infrared heaters usually reach a maximum of 95 °C, Welltherm utilizes the high heat radiation effect that can be achieved in the upper temperature range of an infrared heater, thus achieving maximum heat in relation to the electrical energy used.



Thanks to the revolutionary ESHC+ technology in our infrared heating systems, we have been officially recognized as the global market leader.

Product overview

Infrared heaters, metal12/13

Metal white	14
Metal Sand & Graphite	25
Metal RAL	16/17
Metal Picture	18/19

Infrared heaters Glass 20/21

Glass Satino	22
Glass Satino PRO	23
Glass Mirror	24
Glass board	25

Infrared Bathroom radiator 26/27

Bathroom radiator Satino	28
Bathroom radiator Metal white	29
Bathroom radiator Metal graphite black	30
Bathroom radiator Metal sand	31
Bathroom radiator SET	32

Infrared-Radiant heater34/35

HP Classic black	36
HP Glass black	37
HP Classic white	38
HP Glass white	39

Infrared-Special applications 40/41

High-temperature heating	42/43
HPPW	44
HPIW	45
Church pew heating	46
Desk heater	47

Control engineering48/49

percon plug-in system	50
Temperature control Series DE	52
Temperature control Series SA	54
Temperature control Series WT Fest	56
Dimmer Vida	57
Control technology overview	58/59

Overview Control engineering 58/59

Accessories	60/61
Ceiling mounting frame	62/63
Light frame LED	64/65
Floor stand	66
Universal stand	67



Metal Infrared heaters

Welltherm powder-coated metal heaters have a very high heat utilization value thanks to their specially coated surface. They are lightly textured, stove-enamelled white, and therefore very scratch-resistant and color-fast. The heater features our particularly robust and durable ESHC Plus heating element, which heats the entire surface.

Special thermal insulation makes Welltherm metal heating a highly efficient and sustainable heating system, while also reducing heat loss at the rear.

All heating variants are frameless. Whether vertical, horizontal, or simply square, our radiators can be mounted in any position, even suspended from the ceiling. Thanks to their mounting mechanisms, they offer a stable, secure hold. Naturally, our metal infrared heaters comply with all applicable safety regulations and are TÜV-approved.

Features:

- Slim design, 16 mm thick
- Small wall clearance, approx. 46 mm
- Frameless
- Vertical and horizontal wall mounting possible
- Ceiling mounting possible
- Silk matt baked enamel finish
- Fireproof galvanized housing
- Two integrated thermal safety switches
- Highly efficient rear insulation
- 650 mm connection cable with precon plug-in system

Technical data:

Voltage: 1/N/PE 230 V

Frequency: 50 Hz

Protection class: IP 21

Heating technology: ESHC Plus

Certificate: TÜV approval



Metal

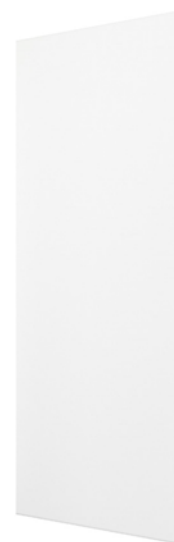
Metal infrared heaters
with a very high heat utilization value
Robust and durable



Metal White

Technical specifications:

Front:	Metal, stove-enameled
Model:	Metal
Color:	white, RAL 9003
Surface:	Silk matt
Voltage:	1/N/PE 230 V
Frequency:	50 Hz
Protection class:	IP 21
Protection class:	I
Heating technology:	ESHC Plus
Connection cable:	650 mm, white
Plug:	precon plug-in system
Mounting:	Wall & ceiling



Item No.	Dimensions (cm)	Power (W)	Amperage (A)	Weight (kg)	Suitable for rooms (m²)
PBO210	39,2 x 59,2 x 1,7	210	0,9	4,5	3 - 4
PBO260	29,2 x 89,2 x 1,7	260	1,1	5,3	3 - 5
PBO330	59,2 x 59,2 x 1,7	330	1,4	7,8	5 - 7
PBO340	61,8 x 61,8 x 1,7	340	1,5	8,0	5 - 7
PBO360	29,2 x 119,2 x 1,7	360	1,6	6,9	5 - 7
PBO510	59,2 x 89,2 x 1,7	510	2,2	11,0	7 - 10
PBO610	39,2 x 149,2 x 1,7	610	2,7	10,7	9 - 12
PBO710	59,2 x 119,2 x 1,7	710	3,1	14,0	10 - 14
PBO760	40,0 x 180,0 x 1,7 cm	760	3,3	13,0	11 - 15
PBO910	59,2 x 149,2 x 1,7	910	4,0	17,0	13 - 18
PB1000	80,0 x 120,0 x 1,7	1000	4,3	18,5	14 - 20
PB1100	90,0 x 120,0 x 1,7	1100	4,8	20,7	15 - 22
PB1210	75,0 x 150,0 x 1,7	1210	5,3	21,5	17 - 24
PB1410	120,0 x 120,0 x 1,7	1410	6,1	28,0	20 - 28

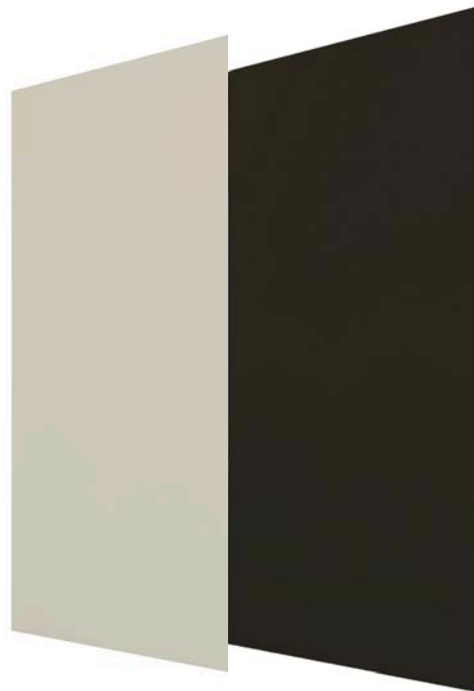
This product must be supplemented by a controller in order to meet the mandatory ecodesign requirements of EU Regulation 2024/1103. (p. 50 ff)



Metal Sand & Graphite

Technical specifications:

Front:	Metal, stove-enameled
Model:	Metal Sand / Graphite
Color:	Sand / Graphite
Surface:	Silk matt
Voltage:	1/N/PE 230 V
Frequency:	50 Hz
Protection class:	IP 21
Protection category:	I
Heating technology:	ESHG Plus
Connection cable:	650 mm, white
Plug:	precon plug-in system
Mounting:	Wall & ceiling



Sand

Item No.	Dimensions (cm)	Power (W)	Amperage (A)	Weight (kg)	Suitable for rooms (m²)
PBSA0710	59,2 x 119,2 x 1,7	710	3,1	14	10 - 14
PBSA0910	59,2 x 149,2 x 1,7	910	4	17	13 - 18

Graphite

Item No.	Dimensions (cm)	Power (W)	Amperage (A)	Weight (kg)	Suitable for rooms (m²)
PBMG0710	59,2 x 119,2 x 1,7	710	3,1	14	10 - 14
PBMG0910	59,2 x 149,2 x 1,7	910	4	17	13 - 18

This product must be supplemented by a controller in order to meet the mandatory ecodesign requirements of EU Regulation 2024/1103. (p. 50 ff)



Metal RAL

Technical specifications:

Front:	Metal, stove-enameled
Model:	Metal RAL
Color:	RAL customizable*
Surface:	Silk matt
Voltage:	1/N/PE 230 V
Frequency:	50 Hz
Protection class:	IP 21
Protection category:	I
Heating technology:	ESHC Plus
Connection cable:	650 mm, white
Plug:	precon plug-in system
Mounting:	Wall & ceiling

* The color specification provided to us should always be understood as an approximation in print. Due to the material, slight color deviations may occur during the production of the heater.



Item No.	Dimensions (cm)	Power (W)	Amperage (A)	Weight (kg)	Suitable for rooms (m²)
FAPB0330	59,2 x 59,2 x 1,7	330	1,4	7,8	5 - 7
FAPB0510	59,2 x 89,2 x 1,7	510	2,2	11,0	7 - 10
FAPB0710	59,2 x 119,2 x 1,7	710	3,1	14,0	10 - 14
FAPB0910	59,2 x 149,2 x 1,7	910	4,0	17,0	13 - 18
FAPB1210	75,0 x 150,0 x 1,7	1210	5,3	21,5	17 - 24

This product must be supplemented by a controller in order to meet the mandatory ecodesign requirements of EU Regulation 2024/1103. (p. 50 ff)

* Technical note Metal RAL

Individual variety: Our infrared heaters are available in a wide range of RAL colors and can be perfectly adapted to your personal style and interior design concept.

The color specification of the proof provided by us should always be understood as an approximation in print. Due to the nature of the materials used, slight color variations may occur during the production of the heater.

 RAL 1001	 RAL 1003	 RAL 1004	 RAL 3007	 RAL 3009	 RAL 3011			
 RAL 1007	 RAL 1012	 RAL 1013	 RAL 3014	 RAL 3020	 RAL 3028			
 RAL 1014	 RAL 1015	 RAL 1016	 RAL 4003	 RAL 4004	 RAL 4005			
 RAL 1018	 RAL 1019	 RAL 1021	 RAL 4006	 RAL 4007	 RAL 4008			
 RAL 1023	 RAL 1028	 RAL 1032	 RAL 4010	 RAL 5000	 RAL 5001			
 RAL 1033	 RAL 2000	 RAL 2001	 RAL 5002	 RAL 5003	 RAL 5004			
 RAL 2002	 RAL 2003	 RAL 2004	 RAL 5005	 RAL 5007	 RAL 5008			
 RAL 2008	 RAL 2009	 RAL 2011	 RAL 5009	 RAL 5010	 RAL 5011			
 RAL 3000	 RAL 3001	 RAL 3002	 RAL 5012	 RAL 5013	 RAL 5014			
 RAL 1001	 RAL 3004	 RAL 3005	 RAL 5015	 RAL 5017	 RAL 5018			
 RAL 5019	 RAL 5020	 RAL 5021	 RAL 7000	 RAL 7001	 RAL 7002	 RAL 7043	 RAL 7044	 RAL 7045
 RAL 5022	 RAL 5023	 RAL 5024	 RAL 7003	 RAL 7004	 RAL 7005	 RAL 7046	 RAL 7047	 RAL 8000
 RAL 6000	 RAL 6001	 RAL 6002	 RAL 7006	 RAL 7010	 RAL 7011	 RAL 8001	 RAL 8002	 RAL 8003
 RAL 6003	 RAL 6004	 RAL 6005	 RAL 7012	 RAL 7013	 RAL 7015	 RAL 8004	 RAL 8007	 RAL 8011
 RAL 6007	 RAL 6009	 RAL 6011	 RAL 7016	 RAL 7021	 RAL 7022	 RAL 8012	 RAL 8014	 RAL 8015
 RAL 6012	 RAL 6013	 RAL 6016	 RAL 7016	 RAL 7021	 RAL 7022	 RAL 8016	 RAL 8017	 RAL 8019
 RAL 6012	 RAL 6013	 RAL 6016	 RAL 7023	 RAL 7024	 RAL 7026	 RAL 8016	 RAL 8017	 RAL 8019
 RAL 6017	 RAL 6018	 RAL 6019	 RAL 7030	 RAL 7031	 RAL 7032	 RAL 8022	 RAL 8028	 RAL 9001
 RAL 6021	 RAL 6024	 RAL 6027	 RAL 7033	 RAL 7034	 RAL 7035	 RAL 9002	 RAL 9003	 RAL 9004
 RAL 6028	 RAL 6029	 RAL 6032	 RAL 7036	 RAL 7037	 RAL 7038	 RAL 9005	 RAL 9010	 RAL 9011
 RAL 6033	 RAL 6034	 RAL 6037	 RAL 7039	 RAL 7040	 RAL 7042	 RAL 9016	 RAL 9017	 RAL 9018



Metal Picture

Technical specifications:

Front:	Metal, stove-enameled
Model:	Metal Picture
Color:	Picture customizable*
Surface:	Silk matt
Voltage:	1/N/PE 230 V
Frequency:	50 Hz
Protection class:	IP 21
Protection category:	I
Heating technology:	ESHC Plus
Connection cable:	650 mm, white
Plug:	precon plug-in system
Mounting:	Wall & ceiling

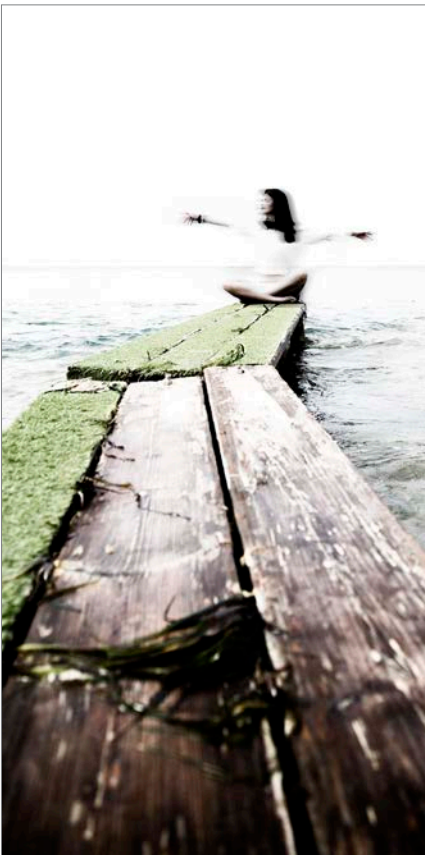
Technical requirements for image files:
 We accept images in JPEG, TIFF, and PSD formats. Image file format:
 Heating format with a minimum of 300 dpi, min. 100 dpi.
 The color specifications of the proof provided by us should always be understood as an approximation in print.



Item No.	Dimensions (cm)	Power (W)	Amperage (A)	Weight (kg)	Suitable for rooms (m ²)
BIPB0330	59,2 x 59,2 x 1,7	330	1,4	7,8	5 - 7
BIPB0510	59,2 x 89,2 x 1,7	510	2,2	11,0	7 - 10
BIPB0710	59,2 x 119,2 x 1,7	710	3,1	14,0	10 - 14
BIPB0910	59,2 x 149,2 x 1,7	910	4,0	17,0	13 - 18
BIPB1000	80,0 x 120,0 x 1,7	1000	4,3	18,5	14 - 20
BIPB1210	75,0 x 150,0 x 1,7	1210	5,3	21,5	17 - 24

This product must be supplemented by a controller in order to meet the mandatory ecodesign requirements of EU Regulation 2024/1103. (p. 50 ff)

Examples



75 x 150



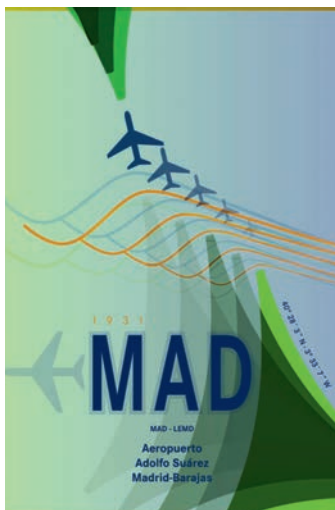
59,2 x 149,2



59,2 x 119,2



80 x 120



59,2 x 89,2

Ejemplos



59,2 x 59,2

Glass Infrared heaters

Welltherm Glass Infrared heaters combine stylish design with maximum efficiency. By combining high-quality, permanently heat-resistant ESG safety glass with its selected surface structure and our ESHC+ technology, we achieve maximum values in terms of radiation factor and radiation proportion. This reduces energy consumption and minimizes operating costs. All heating variants are frameless.

Choose your infrared heater to suit your individual preferences. Whether satin white, practical mirror, or elegant matte black, our infrared heaters blend discreetly into your interior design or add deliberate accents.

Our radiators are available in portrait and landscape formats as well as square and can be mounted in any position, even suspended from the ceiling. Intelligent mounting mechanisms provide a stable, secure hold. Naturally, our glass infrared heaters comply with all applicable safety regulations and have CE approval.

Features:

- Slim design, 22 mm thick
- Small wall clearance, approx. 50 mm
- Frameless
- Vertical and horizontal wall mounting possible
- Ceiling mounting possible
- High-quality single-pane safety glass with heat soak test (ESG-H)
- Glass edges with C-cut
- Rounded corners (radius 5 mm)
- Fireproof galvanized and black stove-enameled housing
- Two integrated thermal safety switches
- Highly efficient rear insulation
- 650 mm connection cable with precon plug-in system

Technical specifications:

Voltage: 1/N/PE 230 V
Frequency: 50 Hz
Protection class: IP X4
Protection category: I
Heating technology: ESHC Plus
Certificate: CE approval



GLASS

Glass-Infrared heaters - the perfect combination of efficiency and design

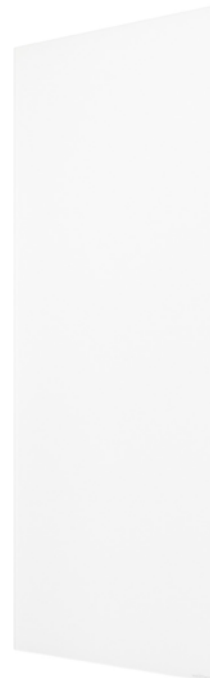
Stylish and powerful



Glass Satino

Technical specifications:

Front:	5 mm ESG-H safety glass
Model:	Satino
Color:	white, similar to RAL 9016
Surface:	satin finish
Voltage:	1/N/PE 230 V
Frequency:	50 Hz
Protection class:	IP X4
Protection category:	I
Heating technology:	ESHC Plus
Connection cable:	650 mm, white
Plug:	precon plug-in system
Mounting:	Wall & ceiling



Item No.	Dimensions (cm)	Power (W)	Amperage (A)	Weight (kg)	Suitable for rooms (m²)
WS0370	60,0 x 60,0 x 2,2	370	1,6	9,6	5 - 7
WS0580	60,0 x 90,0 x 2,2	580	2,5	13,5	8 - 12
WS0780	60,0 x 120,0 x 2,2	780	3,4	17,3	11 - 16
WS0930	60,0 x 150,0 x 2,2	930	4,0	22,0	13 - 19
WS1250	75,0 x 150,0 x 2,2	1250	5,4	27,5	18 - 25

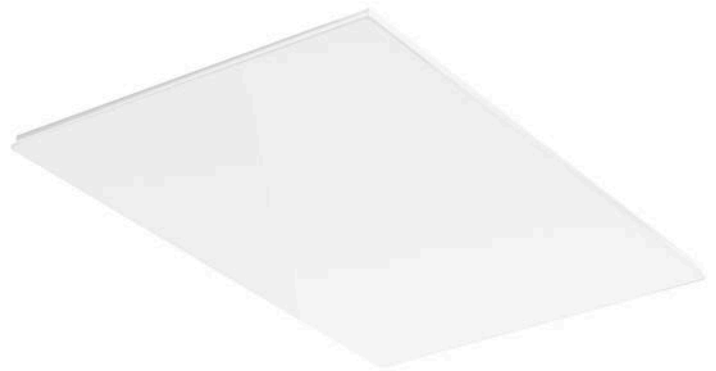
This product must be supplemented by a controller in order to meet the mandatory ecodesign requirements of EU Regulation 2024/1103. (p. 50 ff)



Satino PRO Glass

Technical specifications:

Front:	5 mm ESG-H safety glass
Model:	Satino
Color:	white, similar to RAL 9016
Surface:	satino finish
Voltage:	1/N/PE 230 V
Frequency:	50 Hz
Protection class:	IP X4 Protection class: I
Heating technology:	ESHC Plus
Connection cable:	650 mm, white
Plug:	precon plug-in system
Installation:	Ceiling, due to the increased surface temperature



Item No.	Dimensions (cm)	Power (W)	Amperage (A)	Weight (kg)	Suitable for rooms (m²)
WS0500	60,0 x 60,0 x 2,2	500	2,2	9,6	7 - 10
WS0750	60,0 x 90,0 x 2,2	750	3,3	13,5	11 - 15
WS1000	60,0 x 120,0 x 2,2	1000	4,3	17,3	14 - 20
WS1300	60,0 x 150,0 x 2,2	1300	5,7	22,0	19 - 26

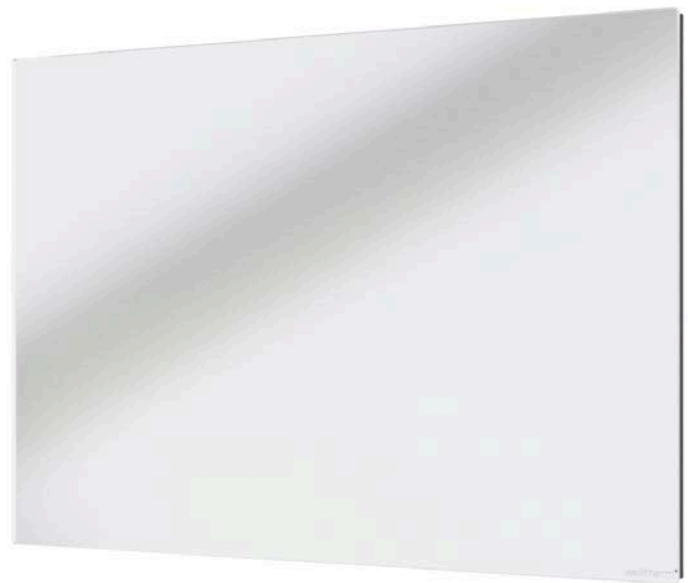
This product must be supplemented by a controller in order to meet the mandatory ecodesign requirements of EU Regulation 2024/1103. (p. 50 ff)



Glass Mirror

Technical specifications:

Front:	5 mm ESG-H safety glass
Model:	Mirror
Color:	Mirror
Surface:	Glossy
Voltage:	1/N/PE 230 V
Frequency:	50 Hz
Protection class:	IP X4
Protection category:	I
Heating technology:	ESHC Plus
Connection cable:	650 mm, white
Plug:	precon plug-in system
Mounting:	Wall & ceiling



Item No.	Dimensions (cm)	Power (W)	Amperage (A)	Weight (kg)	Suitable for rooms (m²)
SP0370	60,0 x 60,0 x 2,2	370	1,6	9,6	5 - 7
SP0580	60,0 x 90,0 x 2,2	580	2,5	13,5	8 - 12
SP0780	60,0 x 120,0 x 2,2	780	3,4	17,3	11 - 16
SP0930	60,0 x 150,0 x 2,2	930	4,0	22,0	13 - 19
SP1250	75,0 x 150,0 x 2,2	1250	5,4	27,5	18 - 25

Este producto debe complementarse con controlador para cumplir las obligaciones de los artículos 2024/1100 (p. 50 y siguientes)



Gildris Board

Technical specifications:

Frontal:	5 mm ESG Hohefestigglas de 5 mm tipo ESG-H
Modelo:	Blackboard
Color:	Black, similar to RAL 9005
Surface:	satin finish
Voltage:	1/N/PE 230 V
Frecuencia:	50 Hz
Protection class:	IP X4
Indice de protección:	I
Clase de aislamiento:	ESHC plus
Technology:	ESHC plus
Connection cable:	650 mm, white
Alimentación:	650 mm, blanco
Enchufe:	precon sistema de enchufe precon
Montaje:	wall & ceiling sistema de enchufe precon



Núm.No. de artículo	Dimensiones (cm)	Potencia (W)	Intensidad (A) (A)	Peso (kg)	Aplicable habitaciones (nº)
TA0580	60,0 x 90,0 x 2,2	580	2,5	13,5	8 - 12
TA0780	60,0 x 120,0 x 2,2	780	3,4	17,3	11 - 16
TA0930	60,0 x 150,0 x 2,2	930	4,0	22,0	13 - 19

Este producto es un suplemento de la norma EN 60335-1 y cumple con los requisitos de la Directiva de Seguridad de la UE (CE) (p. 50 y siguientes)



Infrared-Bathroom radiator

The infrared bathroom radiators from the BKW Plus Series offer an unprecedented variety of options. In addition to numerous colors and sizes, the heaters can be equipped with solid yet elegant towel rails in various lengths.

Take the liberty to realize your own individual ideas. Whether you prefer a simple design with matte surfaces, an elegant look with a glass front, or a purist black or sand color—the range of possibilities is enormous. Everyone is guaranteed to find the right solution for them here.

But the BKW Plus Series isn't just visually appealing—Welltherm bathroom radiators also impress with their technical features. The integrated dual heating system combines the convenience of energy-optimized towel drying in the lower part of the radiators with powerful room heating in the upper part.

Of course, all radiators in the BKW Plus Series meet the requirements of Zone 2 (IPX4) and can therefore be used right next to a shower or bathtub.

Comfort:

- Simple control via a single room thermostat, which centrally controls both heating zones of the dual heating system.
- Adjusted heat output for energy-optimized towel drying in the lower part of the heater.
- Efficient room temperature control via a powerful heating element in the upper part of the bathroom radiator.
- Wide variety of options in terms of power, size, color, and surface finish, with a total of 3 different towel rails (can be mounted on the left or right).



BAD

Bathroom radiator - Optimal interplay
of functionality and aesthetics

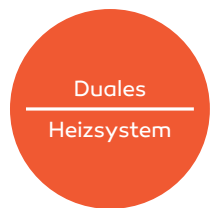
Stylish design & maximum heating comfort



Bathroom radiator Satino

Technical specifications:

Front:	5 mm ESG-H safety glass
Model:	BP Satino
Color:	white, similar to RAL 9016
Surface:	satini finish
Voltage:	1/N/PE 230 V
Frequency:	50 Hz
Protection class:	IP X4
Protection category:	I
Heating technology:	ESHC Plus, dual heating system
Connection cable:	650 mm, white
Plug:	precon plug-in system
Mounting:	Wall



Item No.	Color	Surface	Dimensions (cm)	Power (W)	Amperage (A)	Weight (kg)	Possible hangers
BPWS0550	white, similar RAL 9016	satiniert	60,0 x 120,0 x 2,2	550	2,4	16,2	1
BPWS0660	white, similar RAL 9016	satiniert	60,0 x 150,0 x 2,2	660	2,9	20,3	2
BPWS0850	white, similar RAL 9016	satiniert	60,0 x 180,0 x 2,2	850	3,7	24,5	3

Towel rack options

Item No.	Surface	Typ	Dimensions (cm)
BEE0430	brushed stainless steel	open on one side	43,0 x 4,0 x 0,5
BEE0550	brushed stainless steel	open on one side	55,0 x 4,0 x 0,5
BEE0650	brushed stainless steel	closed on both sides	45,0 x 4,0 x 0,5

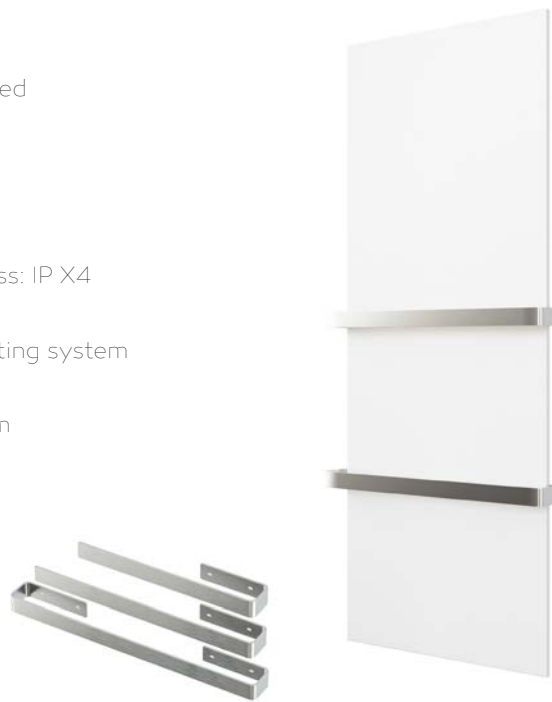
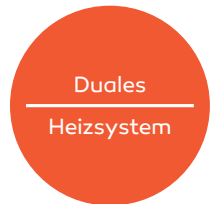
Este producto debe complementarse con un cable de tierra para cumplir los requisitos obligatorios de diseño ecológico del Reglamento 2024/1103 de la UE. (p. 50 y siguientes)



Bathroom radiator Metal white

Technical specifications:

Front:	Metal, stove-enameled
Model:	BP Metal
Color:	white, RAL 9003
Surface:	silk matt
Voltage:	1/N/PE 230 V
Frequency:	50 Hz Protection class: IP X4
Protection class:	I
Heating technology:	ESHC Plus, dual heating system
Connection cable:	650 mm, white
Plug:	precon plug-in system
Mounting:	Wall



Item No.	Color	Surface	Dimensions (cm)	Power (W)	Amperage (A)	Weight (kg)	Possible hangers
BPPB0550	white, RAL 9003	seidenmatt	60,0 x 120,0 x 1,7	550	2,4	14,1	1
BPPB0660	white, RAL 9003	seidenmatt	60,0 x 150,0 x 1,7	660	2,9	18,7	2
BPPB0850	white, RAL 9003	seidenmatt	60,0 x 180,0 x 1,7	850	3,7	23,3	3

Towel rack options

Item No.	Surface	Typ	Dimensions (cm)
BEE0430	brushed stainless steel	open on one side	43,0 x 4,0 x 0,5
BEE0550	brushed stainless steel	open on one side	55,0 x 4,0 x 0,5
BEE0650	brushed stainless steel	double hanger	55,0 x 4,0 x 0,5

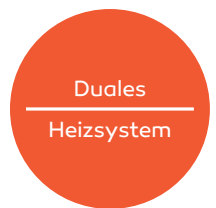
Este producto debe complementarse con un cable de conexión para cumplir los requisitos obligatorios de diseño ecológico del Reglamento 2024/1103 de la UE. (p. 50 y siguientes)



Bathroom radiator Metal graphite black

Technical specifications:

Front:	Metal, stove-enameled
Model:	BP Metal
Color:	Graphite black, RAL 7016
Surface:	Textured
Voltage:	1/N/PE 230 V
Frequency:	50 Hz
Protection class:	IP X4
Protection category:	I
Heating technology:	ESHC Plus, dual heating system
Connection cable:	650 mm, white
Plug:	precon plug-in system
Mounting:	Wall



Item No.	Color	Surface	Dimensions (cm)	Power (W)	Amperage (A)	Weight (kg)	Possible hangers
BPMG0550	graphite black, RAL 7016	strukturiert	60,0 x 120,0 x 1,7	550	2,4	14,1	1
BPMG0660	graphite black, RAL 7016	strukturiert	60,0 x 150,0 x 1,7	660	2,9	18,7	2
BPMG0850	graphite black, RAL 7016	strukturiert	60,0 x 180,0 x 1,7	850	3,7	23,3	3

Towel rack options

Item No.	Surface	Typ	Dimensions (cm)
BEE0430	brushed stainless steel	open on one side	43,0 x 4,0 x 0,5
BEE0550	brushed stainless steel	open on one side	55,0 x 4,0 x 0,5
BEE0650	brushed stainless steel	durchgängig	65,0 x 4,0 x 0,5

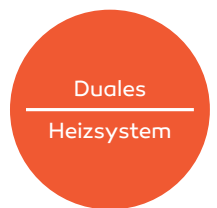
This product must be supplemented by a controller in order to meet the mandatory ecodesign requirements of EU Regulation 2024/1103. (p. 50 ff)



Bathroom radiator Metall Sand

Technical specifications:

Front:	Metal, stove-enameled
Model:	BP Meta
Color:	Sand
Surface:	Textured
Voltage:	1/N/PE 230 V
Frequency:	50 Hz
Protection class:	IP X4
Protection category:	I
Heating technology:	ESHC Plus, dual heating system
Connection cable:	650 mm, white
Plug:	precon plug-in system
Mounting:	Wall



Item No.	Color	Surface	Dimensions (cm)	Power (W)	Amperage (A)	Weight (kg)	Possible hangers
BPSA0550	SandColorn	strukturiert	60,0 x 120,0 x 1,7	550	2,4	14,1	1
BPSA0660	SandColorn	strukturiert	60,0 x 150,0 x 1,7	660	2,9	18,7	2
BPSA0850	SandColorn	strukturiert	60,0 x 180,0 x 1,7	850	3,7	23,3	3

Towel rack options

Item No.	Surface	Typ	Dimensions (cm)
BEE0430	brushed stainless steel	open on one side	43,0 x 4,0 x 0,5
BEE0550	brushed stainless steel	open on one side	55,0 x 4,0 x 0,5
BEE0650	brushed stainless steel	durchgängig	65,0 x 4,0 x 0,5

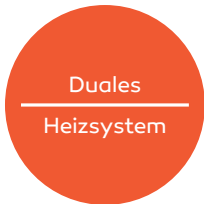
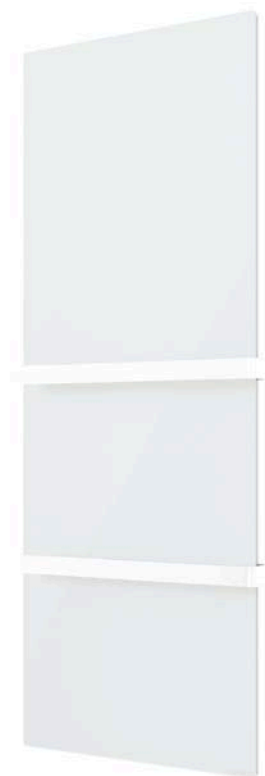
This product must be supplemented by a controller in order to meet the mandatory ecodesign requirements of EU Regulation 2024/1103. (p. 50 ff)



Bathroom radiator SET Metal white inkl. towel rack white

Technical specifications:

Front:	Metal, stove-enameled
Model:	BKMW Metal
Color:	white, RAL 9003
Surface:	textured
Voltage:	1/N/PE 230 V
Frequency:	50 Hz
Protection class:	IP X4
Protection category:	I
Heating technology:	ESHC Plus, dual heating system
Connection cable:	650 mm, white
Plug:	precon plug-in system
Mounting:	Wall



Item No.	Color	Surface	Dimensions (cm)	Power (W)	Amperage (A)	Weight (kg)	Possible hangers
BKMWO660	white, RAL 9003	seda mate	60,0 x 150,0 x 1,7	660	2,9	18,7	2

This product must be supplemented by a controller in order to meet the mandatory ecodesign requirements of EU Regulation 2024/1103. (p. 50 ff)





Infrared-Radiant heater

Welltherm also offers smart and energy-efficient heating solutions for outdoor areas and temporarily used spaces such as garages, conservatories, and production halls.

Welltherm infrared heaters are very powerful and efficient heating devices with a discreet design.

They are available in Klasjak and glass versions. The very short heating phase and unobtrusive, invisible

heat ensure perfect heating of semi-open terraces, loggias, verandas, balconies, conservatories, glass houses, party cellars, garden sheds, and storage and production halls.

For operation that complies with eco-design guidelines and precise control of the room temperature, combine the radiant heater with our DE series wireless thermostat. Optional continuous control is possible using the Vida dimmer via remote control or our app.



RADIATOR

Infrared-DunkelRadiant heater

Invisible warmth, noticeable comfort



HP Classic black

Technical specifications:

Model:	HP Classic
Voltage:	1/N/PE 230 V
Frequency:	50 Hz
Protection class:	IPX4
Area to be heated:	10 - 15 m ²
Technology:	Ceramic radiator
Connection cable:	185 cm
Connection:	Stripped cable ends
Installation height:	from 1,80 m
Mounting:	Wall & ceiling



Item No.	Dimensions (cm)	Power (W)	Heating elements	Weight (kg)	Color
HPKS1950	75,9 x 9,5 x 17,1	1950	3 Ceramic radiator a 650W	4,0	black
HPKS1300	50,9 x 9,5 x 17,1	1300	2 Ceramic radiator a 650W	3,0	black
HPKS0650	26,0 x 9,5 x 17,1	650	1 calefactor cerámico 650W	1,7	black

Ref	Modell	Dimensions (cm)	Weight (kg)	Color
14214	Deckenbügel	9,5 x 30,0	0,4 kg	Acero inoxidable, jan recubrimiento

This product must be supplemented by a controller in order to meet the mandatory ecodesign requirements of EU Regulation 2024/1103. (p. 50 ff)



HP Glass black

Technical specifications:

Model:	HP Glass
Voltage:	1/N/PE 230 V
Frequency:	50 Hz
Protection class:	IPX4
Area to be heated:	10 - 15 m ²
Technology:	Ceramic radiator
Connection cable:	185 cm
Connection:	Stripped cable ends
Installation height:	from 1,80 m
Mounting:	Wall & ceiling



Item No.	Dimensions (cm)	Power (W)	Heating elements	Weight (kg)	Color
HPGS1950	76,7 x 9,5 x 17,1	1950	3 Ceramic radiator a 650W	4,6	black
HPGS1300	51,7 x 9,5 x 17,1	1300	2 Ceramic radiator a 650W	3,3	black
HPGS0650	26,7 x 9,5 x 17,1	650	1 calefactor cerámico 650W	1,9	black

Ref	Modell	Dimensions (cm)	Weight (kg)	Color
14214	Deckenbügel	9,5 x 30,0	0,4 kg	Stainless steel, no coating

This product must be supplemented by a controller in order to meet the mandatory ecodesign requirements of EU Regulation 2024/1103. (p. 50 ff)



HP Klassik white

Technical specifications:

Model:	HP Classic
Voltage:	1/N/PE 230 V
Frequency:	50 Hz
Protection class:	IPX4
Area to be heated:	10 - 15 m ²
Technology:	Ceramic radiator
Connection cable:	185 cm
Connection:	Stripped cable ends
Installation height:	from 1.80 m
Mounting:	Wall & ceiling



Item No.	Dimensions (cm)	Power (W)	Heating elements	Weight (kg)	Color
HPKW1950	75,9 x 9,5 x 17,1	1950	3 Ceramic radiator a 650W	4,0	white
HPKW1300	50,9 x 9,5 x 17,1	1300	2 Ceramic radiator a 650W	3,0	white
HPKW0650	26,0 x 9,5 x 17,1	650	1 Ceramic radiator a 650W	1,7	white

Ref	Modell	Dimensions (cm)	Weight (kg)	Color
14214	Deckenbügel	9,5 x 30,0	0,4 kg	Edelstahl blank, unbeschichtet

This product must be supplemented by a controller in order to meet the mandatory ecodesign requirements of EU Regulation 2024/1103. (p. 50 ff)



HP Glass white

Technical specifications:

Model:	HP Glass
Voltage:	1/N/PE 230 V
Frequency:	50 Hz
Protection class:	IPX4
Area to be heated:	10 - 15 m ²
Technology:	Ceramic radiator
Connection cable:	185 cm
Connection:	Stripped cable ends
Installation height:	from 1.80 m
Mounting:	Wall & ceiling



Item No.	Dimensions (cm)	Power (W)	Heating elements	Weight (kg)	Color
HPGW1950	76,7 x 9,5 x 17,1	1950	3 Ceramic radiator a 650W	4,6	white
HPGW1300	51,7 x 9,5 x 17,1	1300	2 Ceramic radiator a 650W	3,3	white
HPGW0650	26,7 x 9,5 x 17,1	650	1 Ceramic radiator 650W	1,9	white

Ref	Modell	Dimensions (cm)	Weight (kg)	Color
14214	Deckenbügel	9,5 x 30,0	0,4 kg	Edelstahl blank, unbeschichtet

This product must be supplemented by a controller in order to meet the mandatory ecodesign requirements of EU Regulation 2024/1103. (p. 50 ff)



Infrared-Special applications

High-temperature heatingen

High-temperature heating systems make it possible to quickly adjust large temperature differences to the desired temperature. This allows rooms with high ceilings to be heated efficiently. Welltherm high-temperature infrared heaters are an ideal heating solution for car dealerships, industrial halls, and gyms for energy-intensive sports such as hot yoga.

Infrared footwell heating for churches

Specially developed for churches, Welltherm infrared footwell heating offers an energy-saving alternative to previous heating systems, which always had to heat the entire air space of the church. Poor insulation values and extreme room heights inevitably lead to enormous energy losses. Welltherm footwell heating, on the other hand, directs heat specifically to the seats of churchgoers, thus efficiently reducing the sensation of cold. Another major advantage is the segmented switching of grouped rows of seats, depending on the expected number of visitors. This completely prevents unused areas from being heated.

Infrared footwell heating for office workstations

Speziell für Büro-Arbeitsplätze entwickelt, bietet die Welltherm Infrarot-Fußraumheizung eine einfache und effiziente Lösung bei fußkalten Räumen. Mit wenigen Schrauben und dank der in das Gehäuse integrierten Befestigungswinkel kann die Heizung platzsparend direkt unter den Bürotisch montiert werden.

The floor and thus the entire footwell reach a comfortable temperature during heating, which users can adjust to suit their individual needs. To control the heating, we recommend a plug-in thermostat, which automatically regulates the heating during office hours and ensures a consistently comfortable temperature.



SPECIALS

Customized solutions and
special applications

Individual & highly efficient



Infrared-High-temperature heatingen

Efficient heating solutions for special requirements

High-temperature heating systems offer the ideal way to adjust large temperature differences to the desired room temperature in a short time. This feature makes them particularly effective for heating rooms with high ceilings, where conventional heating systems often reach their limits.

Welltherm high-temperature infrared heaters are specially designed to overcome such challenges. They are a first-class heating solution for a wide range of applications:

- In car dealerships, they ensure pleasant and even warmth, even in large showrooms.
- In industrial halls, they provide energy-efficient and targeted heating without unnecessary heat loss.
- In fitness studios that focus on specific energy sports such as hot yoga, they guarantee the high temperatures required for an optimal training experience.

With their high efficiency and versatility, Welltherm high-temperature heaters are the perfect choice for demanding environments.



High-temperature heating

Technical specifications:

Model:	High temperature
Voltage:	1/N/PE 230 V
Frequency:	50 Hz
Protection class:	IP 20
Protection class:	I
Heating technology:	ESHC Plus
Connection cable:	650 mm, white
Plug:	Stripped cable ends
Dimensions (cm):	63.5 x 123.5 x 2.6
Weight (kg):	19.1
Frame:	Yes
Frame color:	Anthracite, RAL 7016
Installation:	Ceiling



Item No.	Front	Color	Surface	Power (W)	Amperage (A)
HT1401	5 mm SafetyGlass Typ ESG-H	white, similar RAL 9016	satiniert	1400	6,1

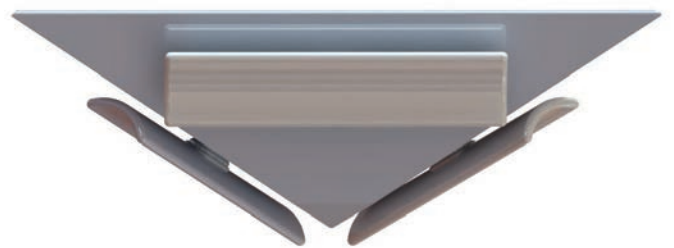
This product must be supplemented by a controller in order to meet the mandatory ecodesign requirements of EU Regulation 2024/1103. (p. 50 ff)



HPPW1950

Technical specifications:

Model:	HPPW1950
Voltage:	1/N/PE 230 V
Frequency:	50 Hz
Protection class:	IP20
Area to be heated:	10 - 25 m ²
Technology:	Ceramic radiator
Connection cable:	185 cm
Plug:	Stripped cable ends
Installation height:	from 1.80 m
Mounting:	Ceiling
Fastening:	Eyelets provided, no additional fastening materials required



Item No.	Dimensions (cm)	Power (W)	Heating elements	Weight (kg)	Color
HPPW1950	46,5 x 10,4	1950	3 Ceramic radiator a 650W	3,1	Alu

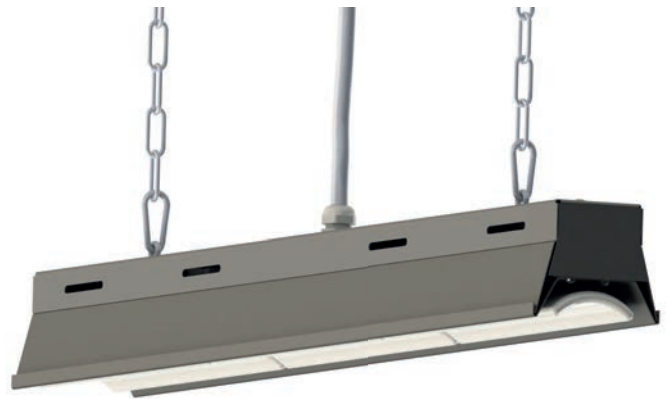
This product must be supplemented by a controller in order to meet the mandatory ecodesign requirements of EU Regulation 2024/1103. (p. 50 ff)



HPIW1950

Technical specifications:

Model:	HPIW1950
Voltage:	1/N/PE 230 V
Frequency:	50 Hz
Protection class:	IP20
Area to be heated:	10 - 25 m ²
Technology:	Ceramic radiator
Connection cable:	185 cm
Plug:	Stripped cable ends
Installation height:	from 1.80 m
Mounting:	Ceiling
Fastening:	Eyelets provided, no additional fastening materials required



Item No.	Dimensions (cm)	Power (W)	Heating elements	Weight (kg)	Color
HPIW1950	75,6 x 9,1	1950	3 Ceramic radiator a 650W	2,6	Alu

This product must be supplemented by a controller in order to meet the mandatory ecodesign requirements of EU Regulation 2024/1103. (p. 50 ff)



Church pew heating

Technical specifications:

Front:	Metal, stove-enameled
Model:	Church pew
Color:	Anthracite, RAL 7016
Surface:	Fine texture
Voltage:	1/N/PE 230 V
Frequency:	50 Hz
Protection class:	IP 21
Protection category:	I
Heating technology:	ESHC Plus
Connection cable:	650 mm, white
Plug:	precon plug-in system



Item No.	Dimensions (cm)	Power (W)	Amperage (A)	Weight (kg)
CBO100	30,0 x 60,0	100	0,4	3,5
CBO150	30,0 x 100,0	150	0,7	5,6



Desk heater

Technical specifications:

Front:	Metal, stove-enameled
Model:	Desk
Color:	Anthracite, RAL 7016
Surface:	Fine texture
Voltage:	1/N/PE 230 V
Frequency:	50 Hz
Protection class:	IP 21
Protection category:	I
Heating technology:	ESHC Plus
Anschlussleitung:	1850 mm, black with stepless cord dimmer
Schuko plug:	yes



Item No.	Dimensions (cm)	Power (W)	Amperage (A)	Weight (kg)
ST0100	30,0 x 60,0	100	0,4	3,8

Control engineering

Welltherm infrared heaters offer much more control engineering than a rotary knob with numbers between 1 and 6. Against the backdrop of the energy transition and legal standards such as the Ecodesign Directive, the aim is to achieve the right comfortable temperature at all times, in every room. This makes control engineering—in addition to the noticeable infrared heat radiation—a decisive factor in comfort. It consists of various components. And one of the best things about it is that 95 percent of all applications are controlled wirelessly via radio connections between the thermostat and radio receiver.

Thermostat for temperature measurement (usually one per room):

How much heat should be generated? And where should this heat be generated? A thermostat provides the answer to both questions. In addition to setting the desired comfort temperature, the thermostat can also be placed where the heat is to be generated: in the sitting area, on a wall, or at the dining table. The Comfort thermostat also allows settings for day and night times on a weekly basis, vacations, frost protection, and much more.

Receivers for heating control (one per heater):

The radio receiver translates the thermostat's heat requirement into the current power requirement of the heating system. For example, it ensures rapid heating at the start of the day cycle; when the target temperature is reached, it simply switches off. This ensures that exactly the right amount of electricity is converted into heat at exactly the right time.

Smart accessories:

Whether Welltherm heaters are controlled via an app using a router or whether demand-based control is supplemented by window sensors, Welltherm Control engineering meets all the requirements of a modern heating system compared to many other heating systems. When the desired comfortable temperature is achieved in the right place in the shortest possible time with the lowest energy consumption, comfort meets energy efficiency!



REGULATION

Comfort meets maximum
energy efficiency

Intelligent & innovative

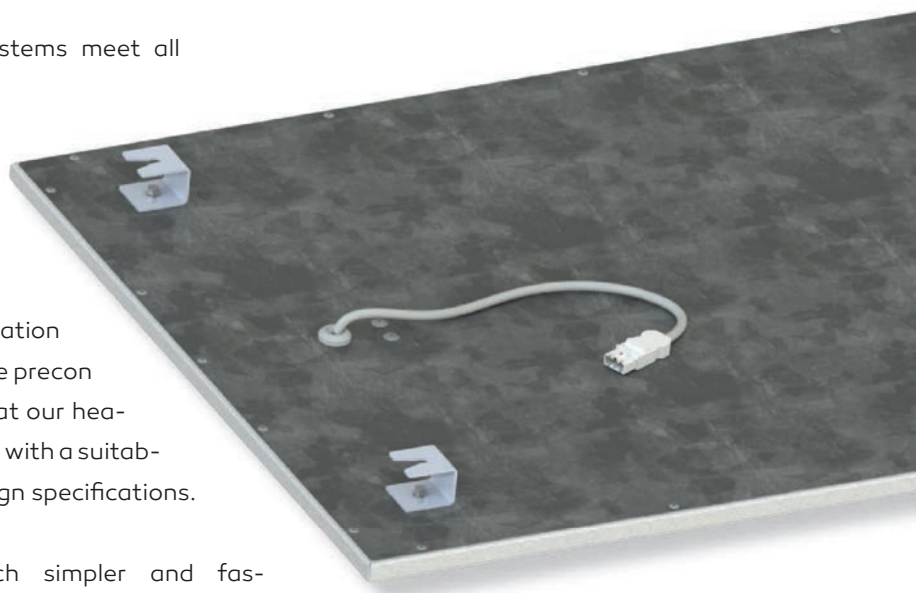


precon[®] Efficiency meets comfort: Welltherm infrared heaters with the new precon plug concept.

Of course, our Welltherm infrared heating systems meet all the requirements of the latest version of the Ecodesign Directive (2024/1103). This means we not only guarantee maximum energy efficiency and sustainability, but also future-proof heating comfort, “Made in Germany.”

To combine this requirement with maximum installation convenience, we are now relying on our innovative precon plug concept. This intelligent system ensures that our heating systems can only be operated in combination with a suitable control system in accordance with the Ecodesign specifications.

At the same time, precon offers a much simpler and faster installation process: connect, plug in, and you're done. This means you benefit from quick and safe installation, and end customers benefit from an efficient heating system that is ready for immediate use. **Welltherm: efficient, convenient, and future-proof.**



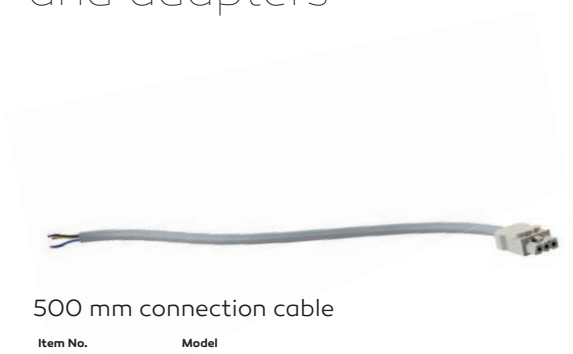
Standard delivery status

Our infrared heating systems are supplied with our innovative precon plug system. (Pre-assembled 650 mm connection cable and 3-pole GST15i3 plug fitted).

Components and adapters

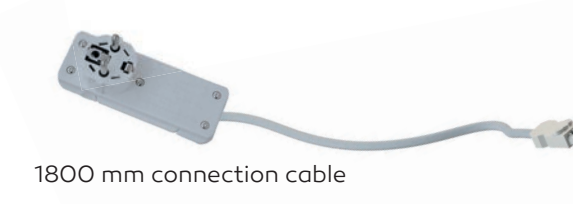


precon[®]



500 mm connection cable

Item No.	Model
PC0001	Side 1: 3-pin GST15i3 female connector, Side 2: stripped cable ends (for connection to receiver)



1800 mm connection cable

Item No.	Model
PC0010	Side 1: 3-pole GST15i3 female connector, side 2: molded Schuko flat connector



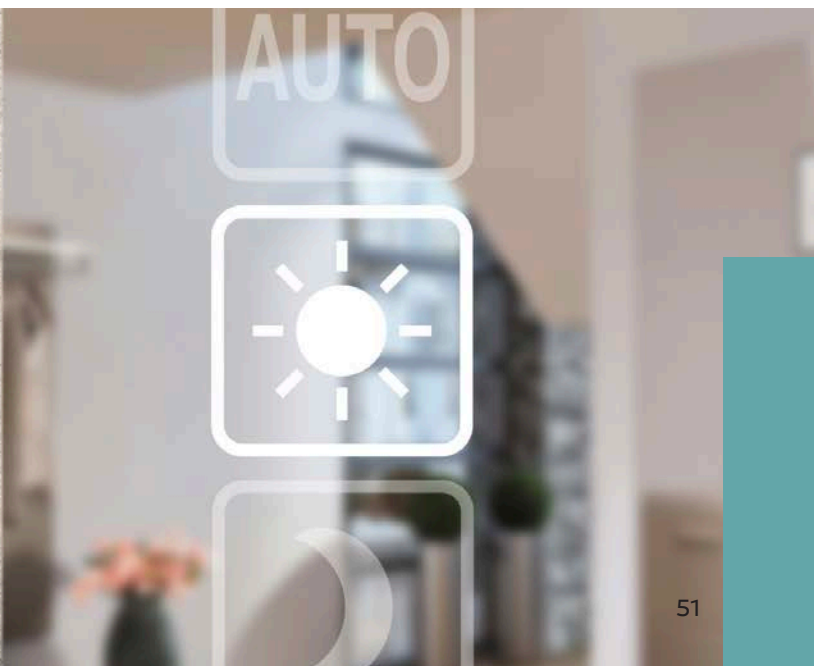
3-pin GST15i3 female connector (on the receiver)

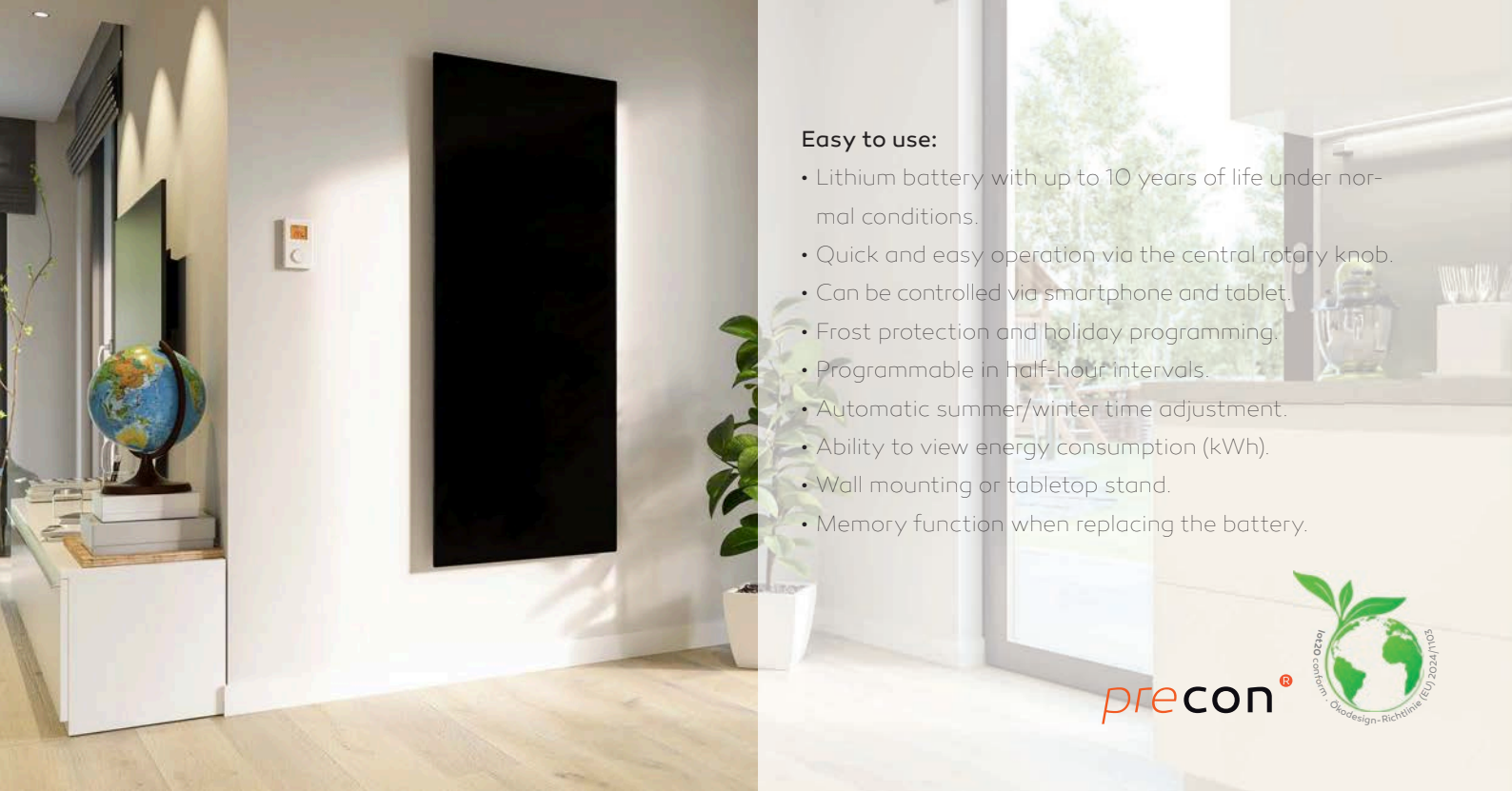
Item No.	Model
PC0100	3-pole GST15i3 female connector



3-pin GST15i3 connector (on the heater)

Item No.	Model
PC0101	3-pole GST15i3 connector



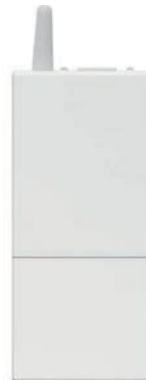


Easy to use:

- Lithium battery with up to 10 years of life under normal conditions.
- Quick and easy operation via the central rotary knob.
- Can be controlled via smartphone and tablet.
- Frost protection and holiday programming.
- Programmable in half-hour intervals.
- Automatic summer/winter time adjustment.
- Ability to view energy consumption (kWh).
- Wall mounting or tabletop stand.
- Memory function when replacing the battery.



Temperature control Serie DE



Technical specifications:

Thermostat DE

Radio transmission:	bidirectional
Protocols:	X3D
Energy storage	Lithium-Ionen Batterie
Frequency:	868 MHz
Temperature setting range:	+ 5 °C... + 30 °C
Degree of protection:	IP30
Color:	white
App control possible:	yes

Technical specifications:

Recipient DE

Radio transmission:	bidirectional
Protocols:	X3D
Operating voltage:	1/N/ PE 230 V
Frequency:	868 MHz
Operating temperatures:	+ 0 °C... + 40 °C
Degree of protection:	IPx4
Color:	white
App control possible:	yes
Maximum current load:	16 A

Radio thermostat Set DE00050



Item No.	Model
DE00050	Radio thermostat Set DE00050 Radio thermostat DE00000 y Receptor de radio DE00010

Radio thermostat DE00000



Item No.	Model
DE00000	Radio thermostat premium DE

Surface-mounted receiver DE00010



Item No.	Model
DE00010	Surface-mounted receiver DE

Radio thermostat Set DE00050 - 01



Item No.	Model
DE00050 - 01	Radio thermostat Set DE00050-01 Radio thermostat DE00000 and Surface-mounted receiver DE00010-01

Surface-mounted receiver DE00010 - 01



Item No.	Model
DE00010 - 01	Output 1: 500 mm cable and GST15i3 socket, Output 2: Open for direct connection

Radio thermostat Set DE00050 - 11



Item No.	Model
DE00050 - 11	Radio thermostat Set DE00050-11 Radio thermostat DE00000 and Surface-mounted receiver DE00010-11

Surface-mounted receiver DE00010 - 11



Item No.	Model
DE00010 - 11	Output 1: 500 mm cable with GST15i3 female connector, output 2: 1800 mm cable with Schuko flat connector.



precon®



Control elements **Serie SA**

With **precon®** plug system to comply with Ecodesign Regulation 2024/1103.



SA00050

Technical specifications:

Thermostat SA

Radio transmission:	bidirectional
Protocols:	ZigBee 3.0
Energy storage	Rechargeable lithium-ion battery
Frequency:	2,4 GHz
Temperature setting range:	+ 5 °C... + 35 °C
Degree of protection:	IP30
Color:	white
App control:	no

Technical specifications:

Recipient SA

Radio transmission:	bidirectional
Protocols:	ZigBee 3.0
Operating voltage:	1/N/ PE 230 V
Frequency:	2,4 GHz
Operating temperatures:	+ 0 °C... + 50 °C
Degree of protection:	IP54
Color:	white
App control:	no
Maximum current load:	10 A

Radio thermostat Set SA00050



Item No.	Model	
SA00050	Radio thermostat Set SA	Termostato de radio and Surface-mounted receiver SA00010

Surface-mounted receiver SA00010



Item No.	Model	
SA00010	Surface-mounted receiver SA00010	

Radio thermostat Set SA00050 - 01



Item No.	Model	
SA00050 - 01	Radio thermostat Set SA	Radio thermostat and Surface-mounted receiver SA00010-01

Surface-mounted receiver SA00010 - 01



Item No.	Model	
SA00010 - 01	Output 1: 500 mm cable and GST15i3 female connector, output 2: open for direct connection	

Radio thermostat Set SA00050 - 11



Item No.	Model	
SA00050 - 01	Radio thermostat Set SA	Radio thermostat and Surface-mounted receiver SA00010-11

Surface-mounted receiver SA00010 - 11



Item No.	Model	
SA00010 - 01	Output 1: 500 mm cable and GST15i3 female connector, output 2: 1800 mm cable with Schuko flat connector	

Table display



Item No.	Model	
SA00020	Table display	



Temperature control Series WT Fest

Technical specifications:

Transmission: wired (three-/four-wire cable)
Operating voltage: up to 250 V
Installation: in 55 mm flush-mounted box
Temperature setting range: +5 °C... +30 °C
Operating temperatures: 0 °C... +40 °C
Protection class: IP30
Color: white, similar to RAL 9010
App control: no

Additional features

- Preset and customizable time programs
- Optimum start (temperature is reached at the set time)
- Max. 9 switching times per day
- Short-term timer (party) for hourly temperature changes
- Temperature setting range can be limited
- Energy consumption display



Room thermostat Series WT Fest

Item No.	Modell	Dimensions (cm)
11000120	Room thermostat WT Fest	8 x 8 x 4,2 cm

All solutions in "Control Engineering Overview" (p. 50 ff)



Dimmer Vida



- Model: Dimmer Vida
- Voltage: 1/N/PE 230 V
- Protection class: IP 65
- Remote control: Yes
- App control: Yes
- IR remote control reception angle: $60^\circ \pm 5^\circ$
- IR remote control range: approx. 6 m
- Multiple dimmers can be used simultaneously: Yes – individually controllable via app
- Weight: 1.2 kg
- Connection cable: with Schuko plug connection

The Vida dimmer is the ideal plug-in addition to all electric radiant heaters that do not have their own control system. It is simply connected to the power supply via two Schuko plugs and can be controlled using the infrared remote control included in the scope of delivery or conveniently via an app.

The app can also be used to operate several dimmers individually. This means that even larger installations are no problem. Thanks to the external Bluetooth antenna, even long ranges are possible.

The radiant heater can be operated directly on the device, via the infrared remote control supplied, or via the free app. Without question, the most convenient control is via smartphone.



Item No.	Modell	Dimensions (cm)
DVG3000	Dimmer Typ Vida	11,8 x 8,8 x 4,8

All solutions in "Control Engineering Overview" (p. 50 ff)

Overview Control engineering

Temperature control WIRELESS

Our wireless room thermostats offer an intelligent and flexible solution for temperature control. They consist of a wireless room temperature sensor that measures the temperature and acts as a transmitter, and a wireless receiver that is connected directly to heating elements. For eco-design-compliant operation of heating elements, additional window contacts can be integrated for remote control—for maximum efficiency and comfort.

Thermostate, Empfänger und Zubehör der Series WT

- zur Thermostatsteuerung der Infrarodheizung per Funk

Item No.	Designation	Description	Dimensions (cm)	Requirements of the Ecodesign Directive	Operation of electric floor heating
WT00000	Premium wireless thermostat WT	with weekly programming	8,5 x 8,5 x 3,3	fulfilled in combination	
WT00010	surface-mounted receiver WT	10 A/250V with terminal strip for connecting the heater	17 x 5 x 2,8		



Thermostats, receivers, and accessories of the DE Series

- for wireless thermostat control of infrared heating

Item No.	Designation	Description	Dimensions (cm)	Requirements of the Ecodesign Directive	Operation of electric floor heating
DE00001	Basic wireless thermostat DE	Not programmable (router required)	8,1 x 8,1 x 2,2	in combination with DE00010 or other receivers and DE00020 complies	
DE00011	socket receiver DE	10 A /230V with socket for Schuko plug on the heater	14,0 x 7,2 x 7,3		
DE00012	flush-mounted receiver DE	10 A/230V with terminal strip for connecting the heater	5,0 x 4,7 x 3,3		x
DE00020	Router Typ DE	Smart home control - programmable -	10,0 x 10,0 x 2,6	Recommended in the respective combination (see above)	
DE00021	opening detector DE	Contacts for doors/windows or frames	10,0 x 2,6 x 2,6	Recommended in the respective combination (see above)	
DE00022	ground sensor DE	For connecting the underfloor heating to the flush-mounted receiver	3,8 x Ø 0,6 3 m cable "		x





Temperature control WIRE-CONNECTED

Wired room thermostats impress with their simple and reliable functionality. They are wired directly to the heating element and serve as precise room temperature controllers. Thanks to their uncomplicated installation, they are preferred in new buildings or renovation projects, where structural conditions can be optimally taken into account.

Thermostat and accessories of the WT FEST series

- For thermostat control of infrared heating via cable connection (fixed connection)

Item No.	Designation	Description	Dimensions (cm)	Requirements of the Ecode-sign Directive	Operation of electric floor heating
11000121	ground sensor	for WT Fest	2 x Ø 0,8 Cable de 3 m		x



Other controls

plug-in thermostat

Item No.	Designation	Description
CD00010	plug-in thermostat	Setting the desired temperature with time control





Accessories

Welltherm accessories offer you a wide range of options for the ideal installation and flexible mounting of your infrared heating system.

Our well-designed solutions range from ceiling mounting frames and modular LED light frames to mobile stand systems—all developed to make the installation and use of your heating system as comfortable and efficient as possible.

With our innovative accessories, you can optimally align your infrared heating system and use it in a targeted manner.

This not only ensures even heat distribution, but also provides even more effective and energy-efficient heating that is perfectly tailored to your individual needs.



ACCESSORIES

Smart accessories for customized
heating solutions

Flexible & versatile





Ceiling mounting frame

Technical specifications:

Front:	Metall, baked enamel
Modell:	mounting frame
Color:	white, RAL 9003
Surface:	silk matt
Montage:	ceiling



Item No.	Dimensions (cm)	Weight (kg)
EB060060	60,0 x 60,0	1,5
EB090060	60,0 x 90,0	1,9
EB120060	60,0 x 120,0	2,2
EB150060	60,0 x 150,0	2,6

Light frame LED

From an energy perspective, positioning an infrared heater on the ceiling is the best option. In the case of renovation or retrofitting, existing wiring can also be easily used. However, the loss of existing ceiling lights deters many builders. That is why Welltherm has developed an LED light frame that (with or without an additional power cable) emits a pleasant warm white, dimmable light to complement the cozy warmth of the infrared heater.

Thanks to its modular design, it is suitable for both metal and glass heaters. It can be mounted on the wall or ceiling. The Light frame is an attractive accessory, especially for wall-mounted mirror heaters.

Benefits:

- Quick and easy retrofitting to wall- and ceiling-mounted infrared heaters using special magnetic holders.
- Efficient, dimmable LED technology with pleasant warm white light.
- Installation either as a fixed connection or wireless version:

Permanent connection:

Light frame is connected to the existing light cable and light switch.

Wireless connection:

Light frame is connected to the heating cable with the heating system. A designer wall switch in a universal 5.0 x 5.0 cm format controls the light.

Designer wall switch



3D light



magnetic mount



EasyPlugg



Light frame LED



Technical specifications:

Farbe:	Alu, RAL 9006
Lichtfarbe::	Warmweiß (3000K)
Breite::	2,6 cm
Schutzart:	IP20
Umgebungstemperatur:	-20° bis + 50°C
Montage	Wand & Decke

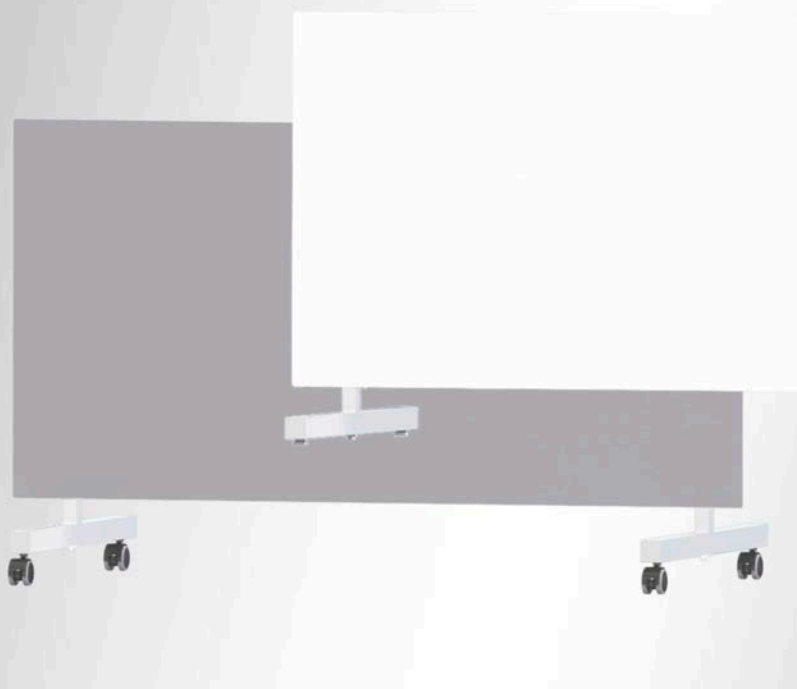
Ref	für Format Heizung (cm)	Dimensions (cm)	Lichtstrom(lm)	Power (W)	Weight (kg)
LI060060	60,0 x 60,0	61,0 x 61,0	4.150	53	0,95
LI090060	60,0 x 90,0	61,0 x 91,0	5.150	66	1,15
LI120060	60,0 x 120,0	61,0 x 121,0	6.150	80	1,35
LI150060	60,0 x 150,0	61,0 x 151,0	7.200	93	1,60
LI120090	90,0 x 120,0	91,0 x 121,0	7200	96	1,65

Pre-assembled sets

Item No.	Modell	Dimensions (cm)	Spannung nominal	Power (W)
Fixed connection: separate power supply for heating & light frame				
LI00300	Transformer, dimmable (voltage sink, 2 x 50 W)	17,7 x 5,7 x 22,5	220 - 240 V AC	2 x 50
Wireless connection: a power supply for heating & light frame				
LI00400	Wireless switch, transformer (100 W)	5,0 x 5,0 x 1,5	220 - 240 V AC	100
	Trafo (100 W) & Dimmer	10,2 x 3,7 x 2,0	12-48 V DC	

Einzelteile:

Item No.	Modell	Dimensions (cm)	Spannung nominal	ambient temperature
LI00040	radio switch	5,0 x 5,0 x 1,5	230 - 240 V AC	-20° - +50°C
LI00060	Schuko connection cable	150,0		-20° - +50°C



- For floor-level installation of Welltherm infrared heaters
- for infrared heaters made of glass and metal with a “60 cm side dimension”
- with and without casters
- Mounting kit consisting of two feet and accessories
- made of high-quality, powder-coated steel

Floor stand

Floor stand rolls

Item No.	Modell	Dimensions (cm)	Material	Color
SF00011	HOR	63,2 x 61,0 x 3,5	High-quality steel, powder-coated	white

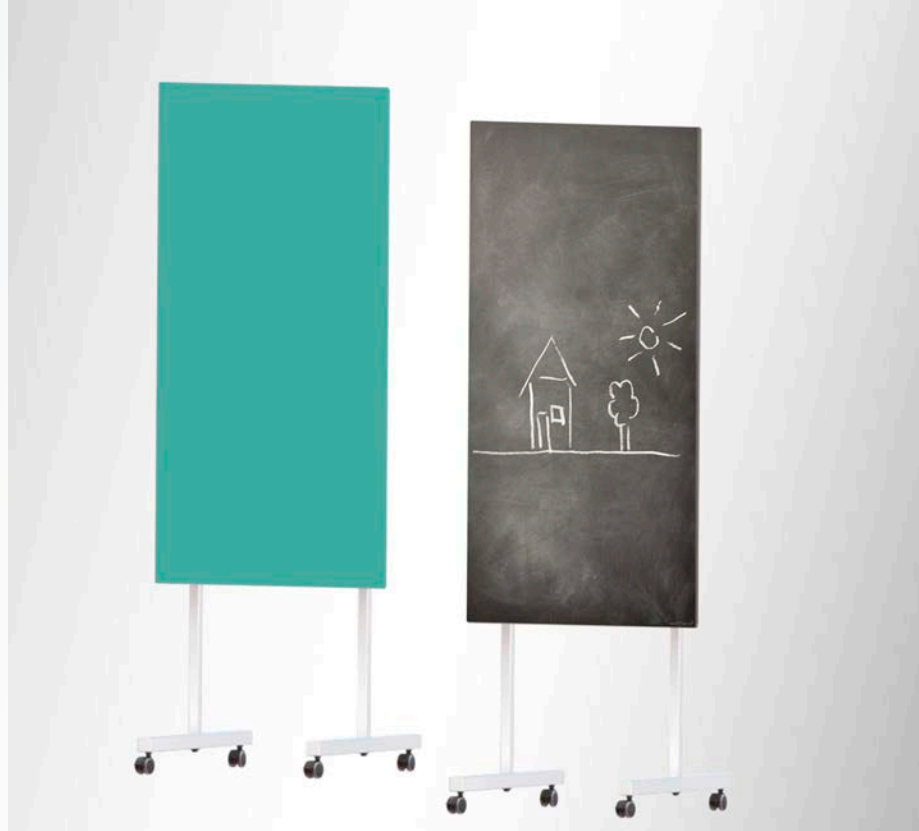
Floor stand Classic

Item No.	Modell	Dimensions (cm)	Material	Color
SF00012	HOS	63,2 x 61,0 x 3,5	High-quality steel, powder-coated	white

For mounting the following heating formats:

Typ de calefacción	Item No.	Dimensions (cm)	Power (W)	Amperage (A)	Weight (kg)	Adecuada para habitaciones (m²)
Metal	XX0210	59,2 x 59,2 x 1,7	210	0,9	4,5	3 - 4
Metal	XX0330	59,2 x 59,2 x 1,7	330	1,4	7,8	5 - 7
Metal	XX0340	61,8 x 61,8 x 1,7	340	1,5	8,0	5 - 7
Metal	XX0510	59,2 x 89,2 x 1,7	510	2,2	11,0	7 - 10
Metal	XX0710	59,2 x 119,2 x 1,7	710	3,1	14,0	10 - 14
Metal	XX0910	59,2 x 149,2 x 1,7	910	4,0	17,0	13 - 18
Glass	XX0370	60,0 x 60,0 x 2,2	370	1,6	9,6	5 - 7
Glass	XX0580	60,0 x 90,0 x 2,2	580	2,5	13,5	8 - 12
Glass	XX0780	60,0 x 120,0 x 2,2	780	3,4	17,3	11 - 16
Glass	XX0930	60,0 x 150,0 x 2,2	930	4,0	22,0	13 - 19

- For flexible mounting of Wellther infrared heaters
- Space-saving, vertical mounting possible for many models
- with casters for use in different locations
- Mounting kit consisting of two feet with casters and accessories
- made of high-quality, powder-coated steel



Universal stand

Universal stand

Item No.	Modell	Dimensions (cm)	Material	Color
SF00010	VEHOR	164,0 x 61,0 x 3,5	High-quality steel, powder-coated	white

For mounting the following heating formats:

Heizungsart	Item No.	Dimensions (cm)	Montage horizontal	Montage vertical	Power (W)	Amperage (A)	Weight (kg)	suitable for rooms (m²)
Metal	XX0210	39,2 x 59,2 x 1,7		●*	210	0,9	4,5	3 - 4
Metal	XX0260	29,2 x 89,2 x 1,7		●	260	1,1	5,3	3 - 5
Metal	XX0330	59,2 x 59,2 x 1,7	●*	●*	330	1,4	7,8	5 - 7
Metal	XX0340	61,8 x 61,8 x 1,7	●*	●*	340	1,5	8,0	5 - 7
Metal	XX0360	29,2 x 119,2 x 1,7		●	360	1,6	6,9	5 - 7
Metal	XX0510	59,2 x 89,2 x 1,7	●*	●	510	2,2	11,0	7 - 10
Metal	XX0610	39,2 x 149,2 x 1,7		●	610	2,7	10,7	9 - 12
Metal	XX0710	59,2 x 119,2 x 1,7	●*	●	710	3,1	14,0	10 - 14
Metal	XX0910	59,2 x 149,2 x 1,7	●*	●	910	4,0	17,0	13 - 18
Metal	XX1000	80,0 x 120,0 x 1,7	●	●	1000	4,3	18,5	14 - 20
Metal	XX1100	90,0 x 120,0 x 1,7		●	1100	4,8	20,7	15 - 22
Metal	XX1210	75,0 x 150,0 x 1,7	●*	●	1210	5,3	21,5	17 - 24
Metal	XX1410	120,0 x 120,0 x 1,7	●	●	1410	6,1	28,0	20 - 28
Glass	XX0370	60,0 x 60,0 x 2,2	●*	●*	370	1,6	9,6	5 - 7
Glass	XX0580	60,0 x 90,0 x 2,2	●*	●	580	2,5	13,5	8 - 12
Glass	XX0780	60,0 x 120,0 x 2,2	●*	●	780	3,4	17,3	11 - 16
Glass	XX0930	60,0 x 150,0 x 2,2	●*	●	930	4,0	22,0	13 - 19
Glass	XX1250	75,0 x 150,0 x 2,2	●*	●	1250	5,4	27,5	18 - 25

* Mounting in the upper part of the stand for installation behind seating furniture, sideboards, etc.

welltherm[®] España

Welltherm España

Belz & Partner S.L.U.
Carrer Illes Balears N° 17
E-7180 Santa Ponsa
Islas Balears / España

t +34 871 913 722

info@welltherm.es
www.welltherm.es

